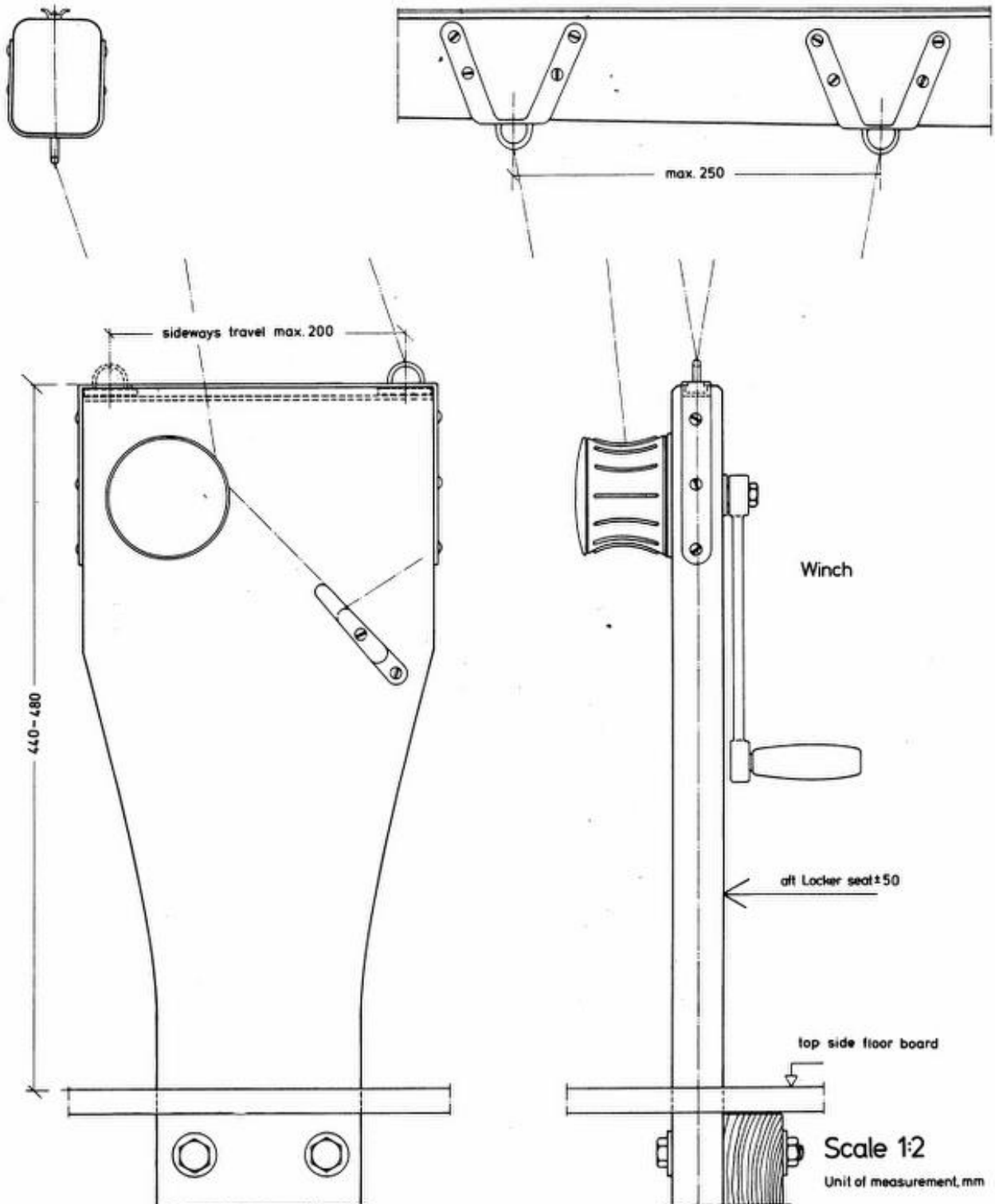
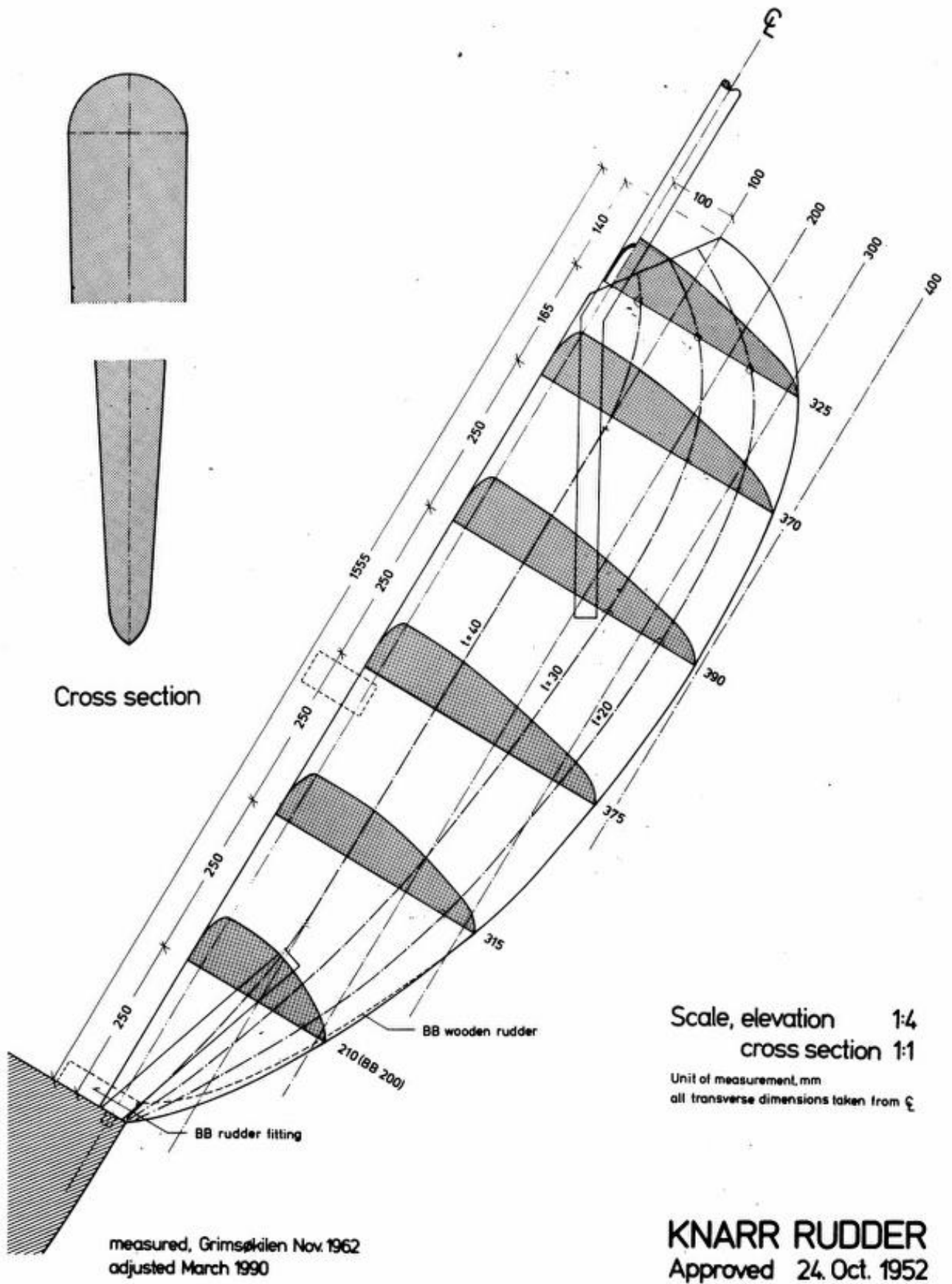


F

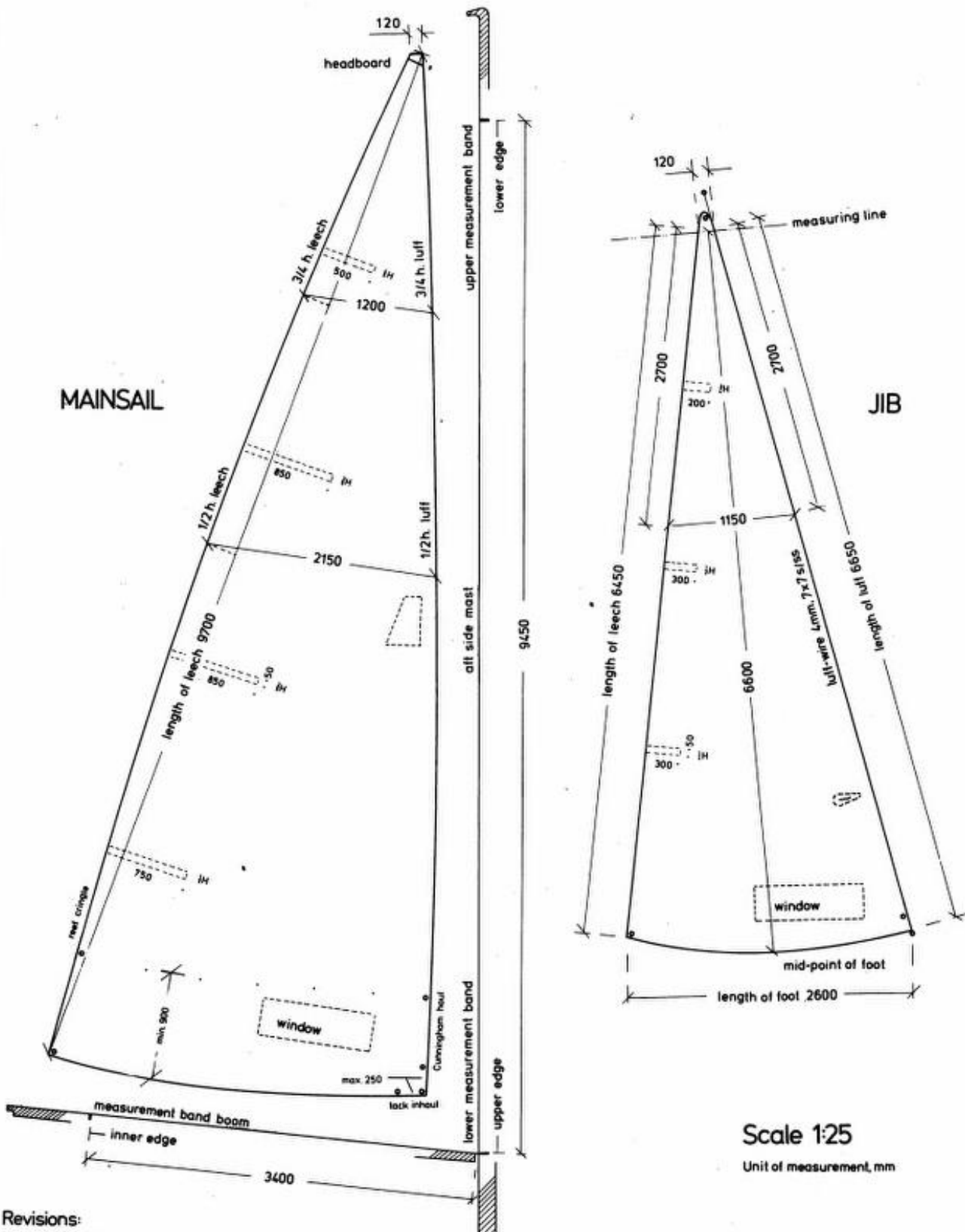


KNARR TRAVELLER POST
for Main sheeting
KNARR Admiralty, DK jan. 1964

adjusted March 1990



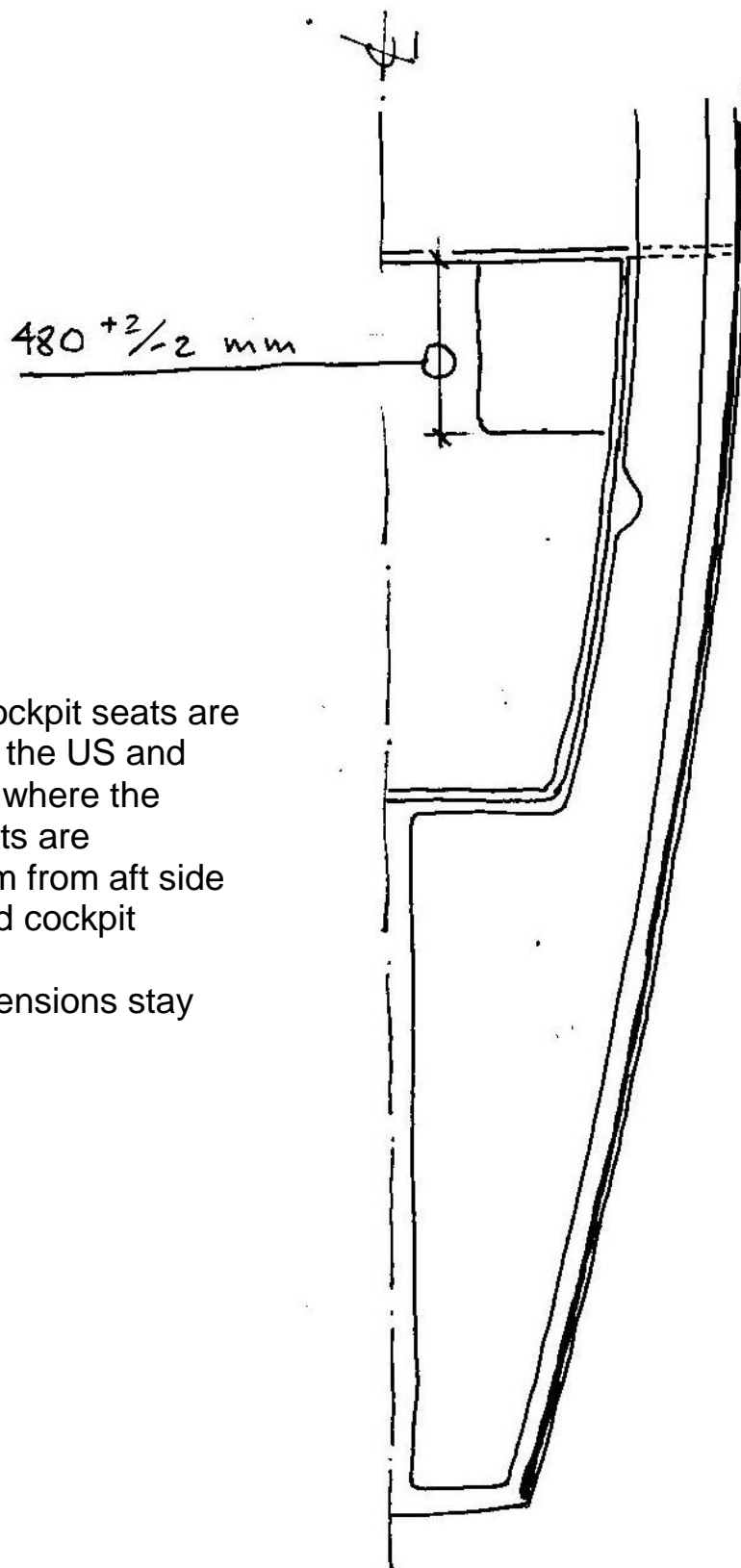
K



Revisions:
 Nov. 1989, windows in sails
 reef in mainsail
 tack inhaul in mainsail

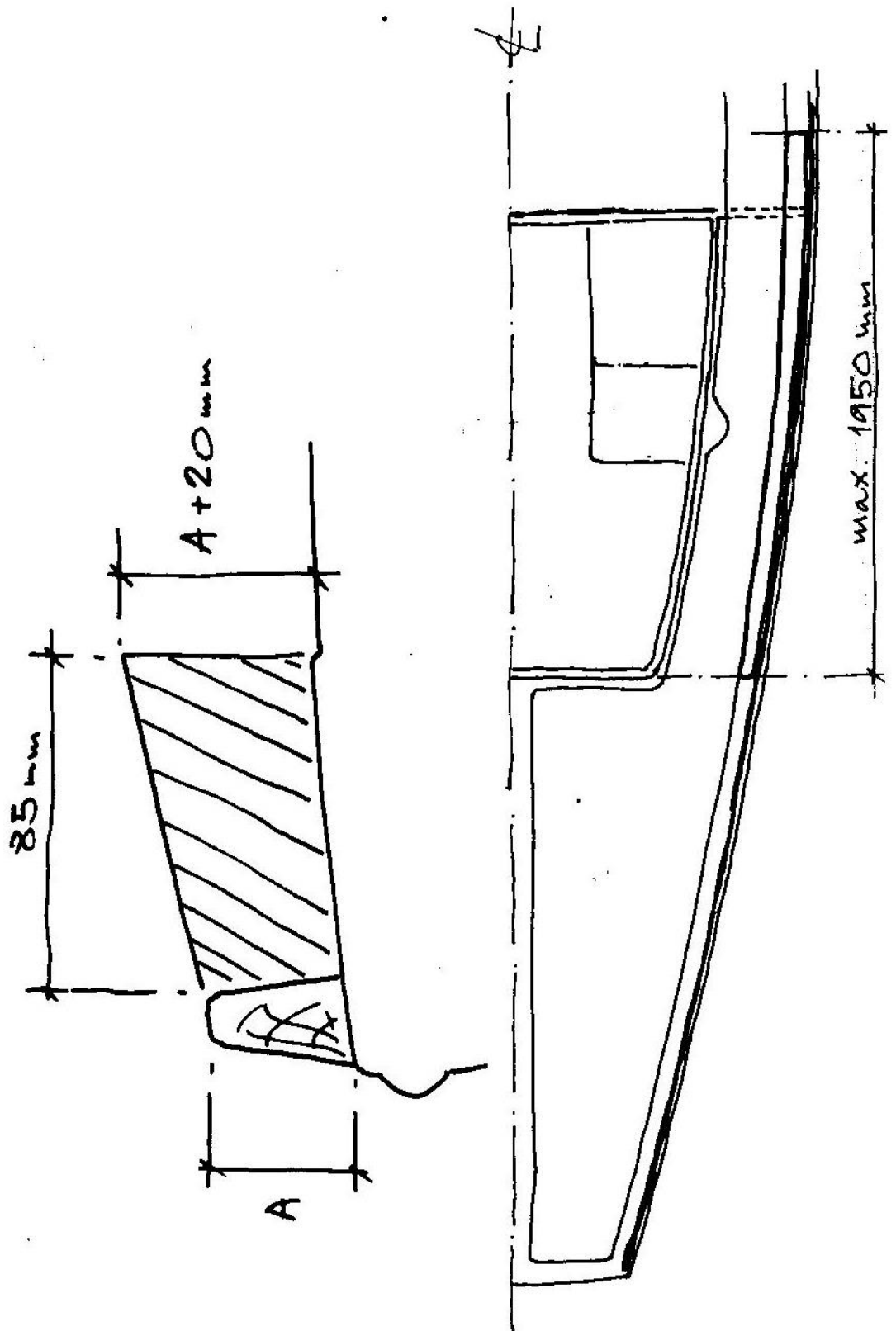
KNARR SAILS
 Approved 1978

L



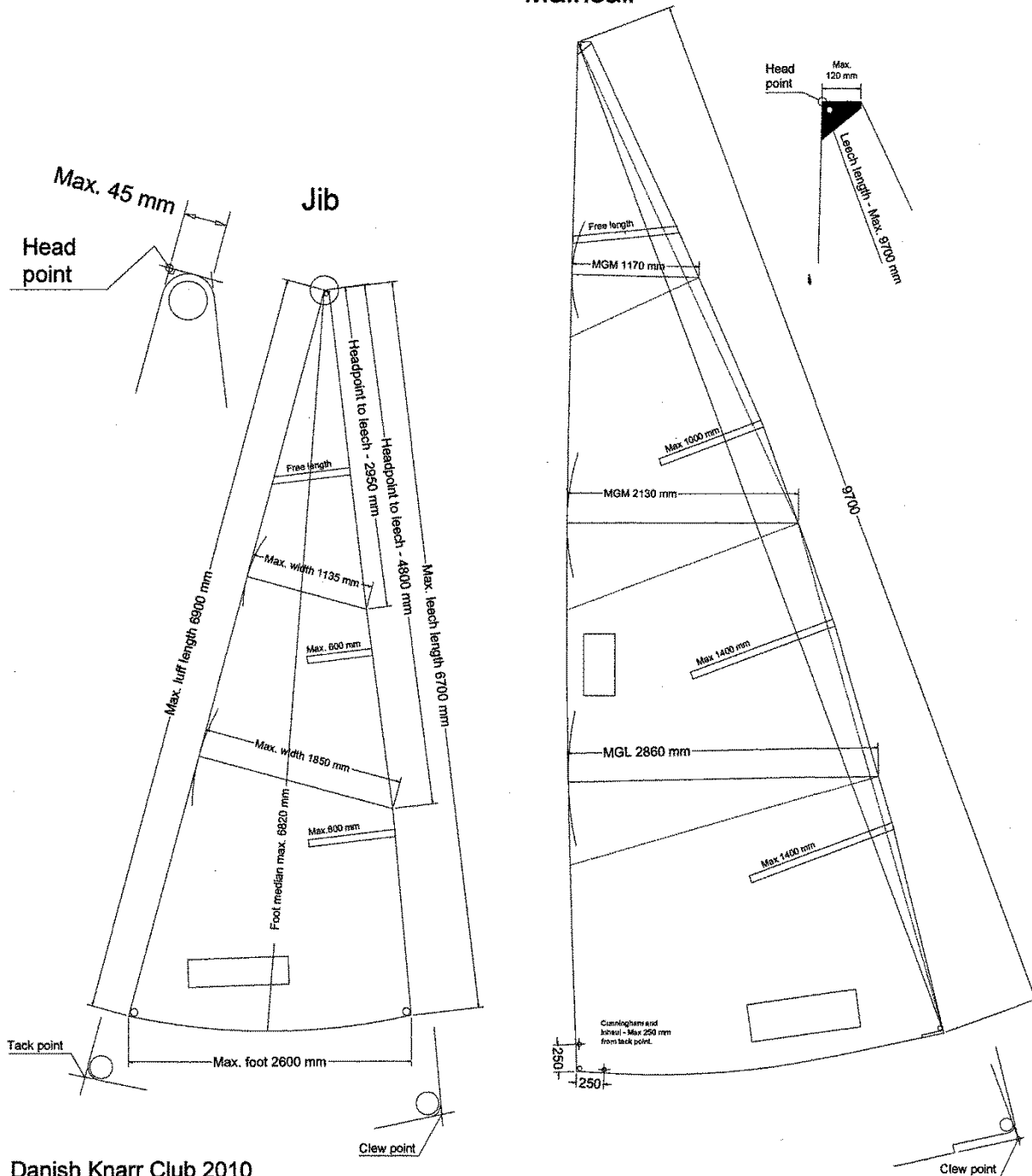
Shortened cockpit seats are permitted for the US and the DK fleet, where the length of seats are $480^{+2/-2}$ mm from aft side of the forward cockpit bulkhead. All other dimensions stay the same.

O



Knarr Measurement Form

Mainsail



Danish Knarr Club 2010

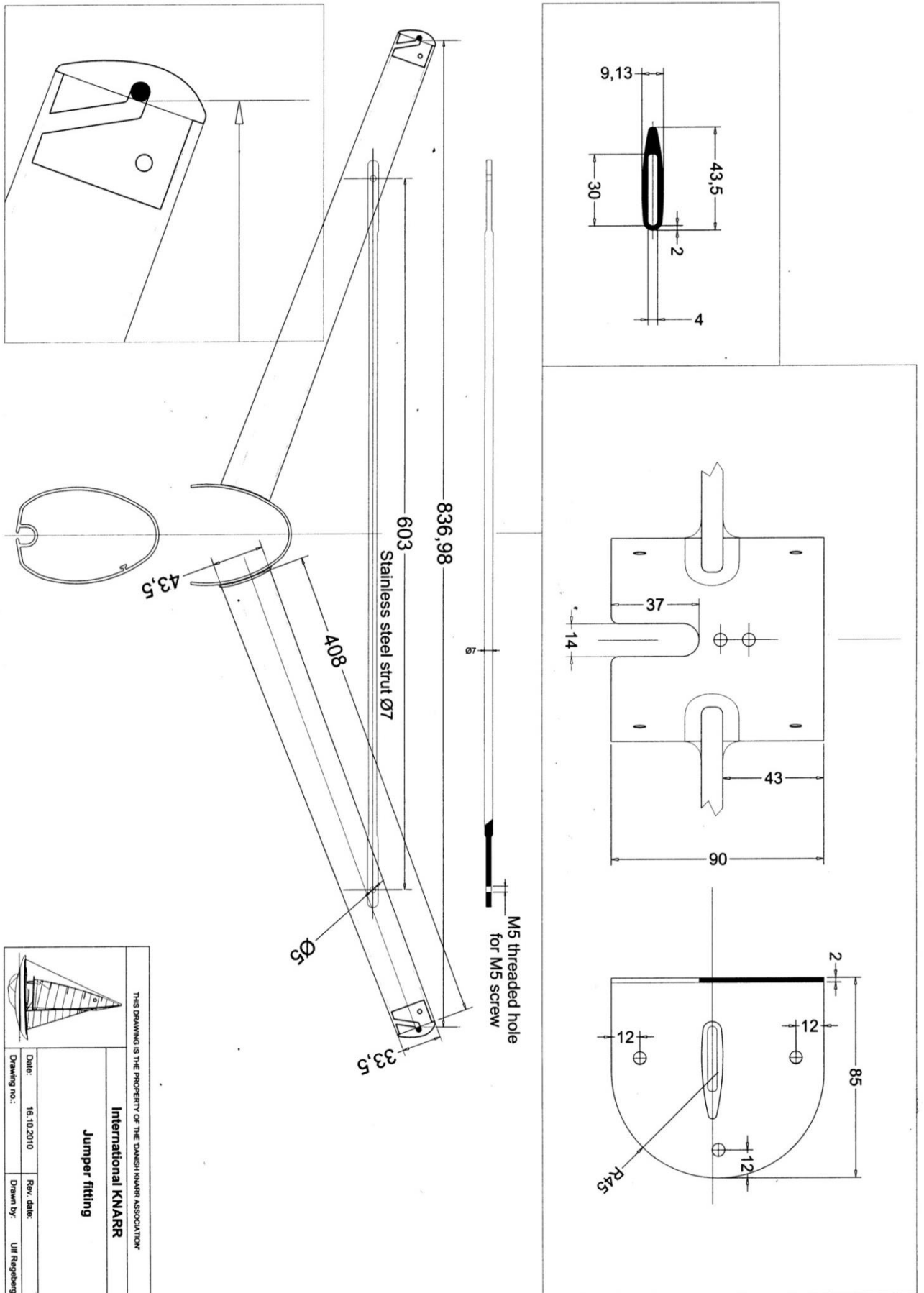
Scale 1 : 50

Approved 3. March 2010

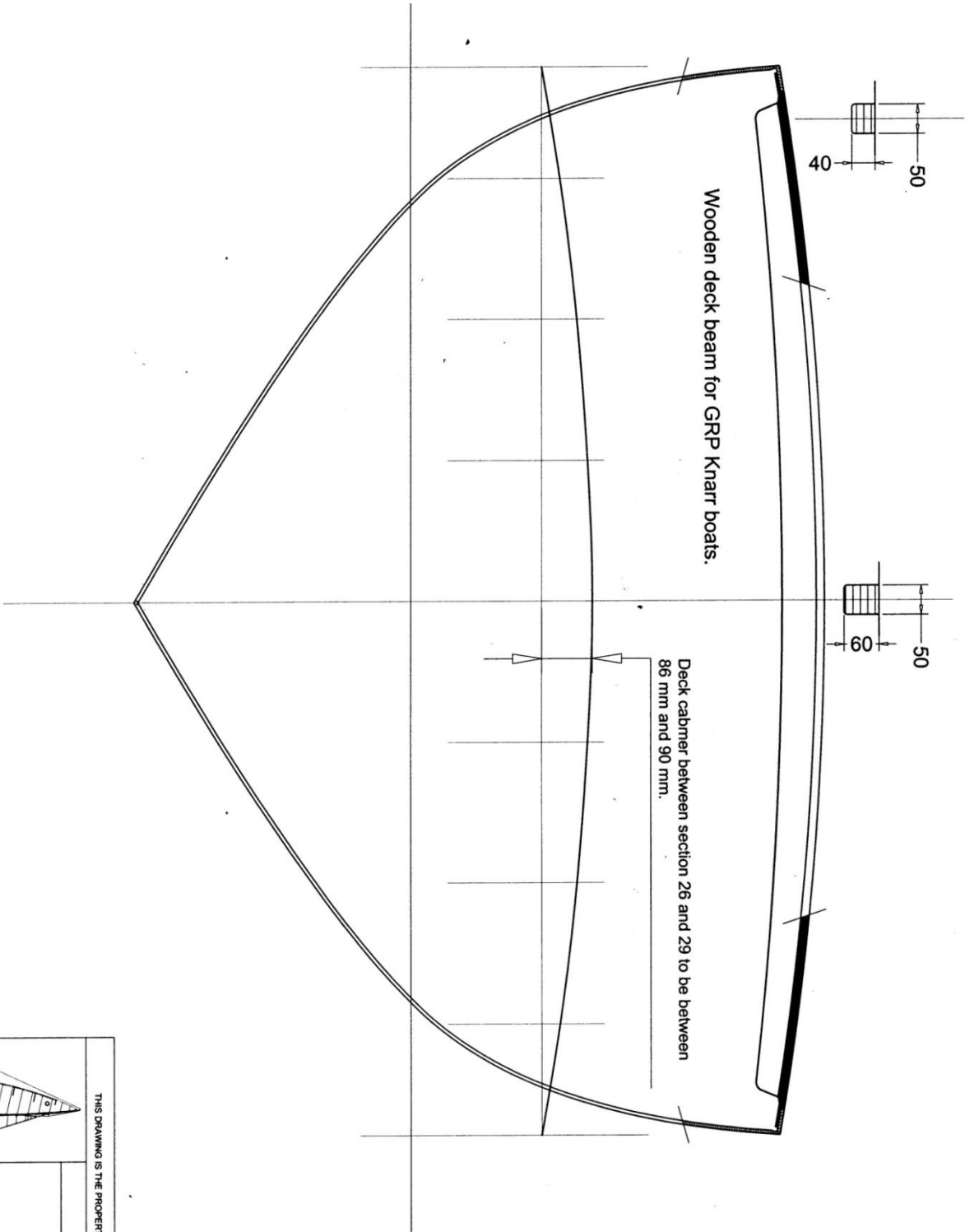
Cor.: Annual meeting November 24. 2010


Cor.: Change of batten length, March 2015

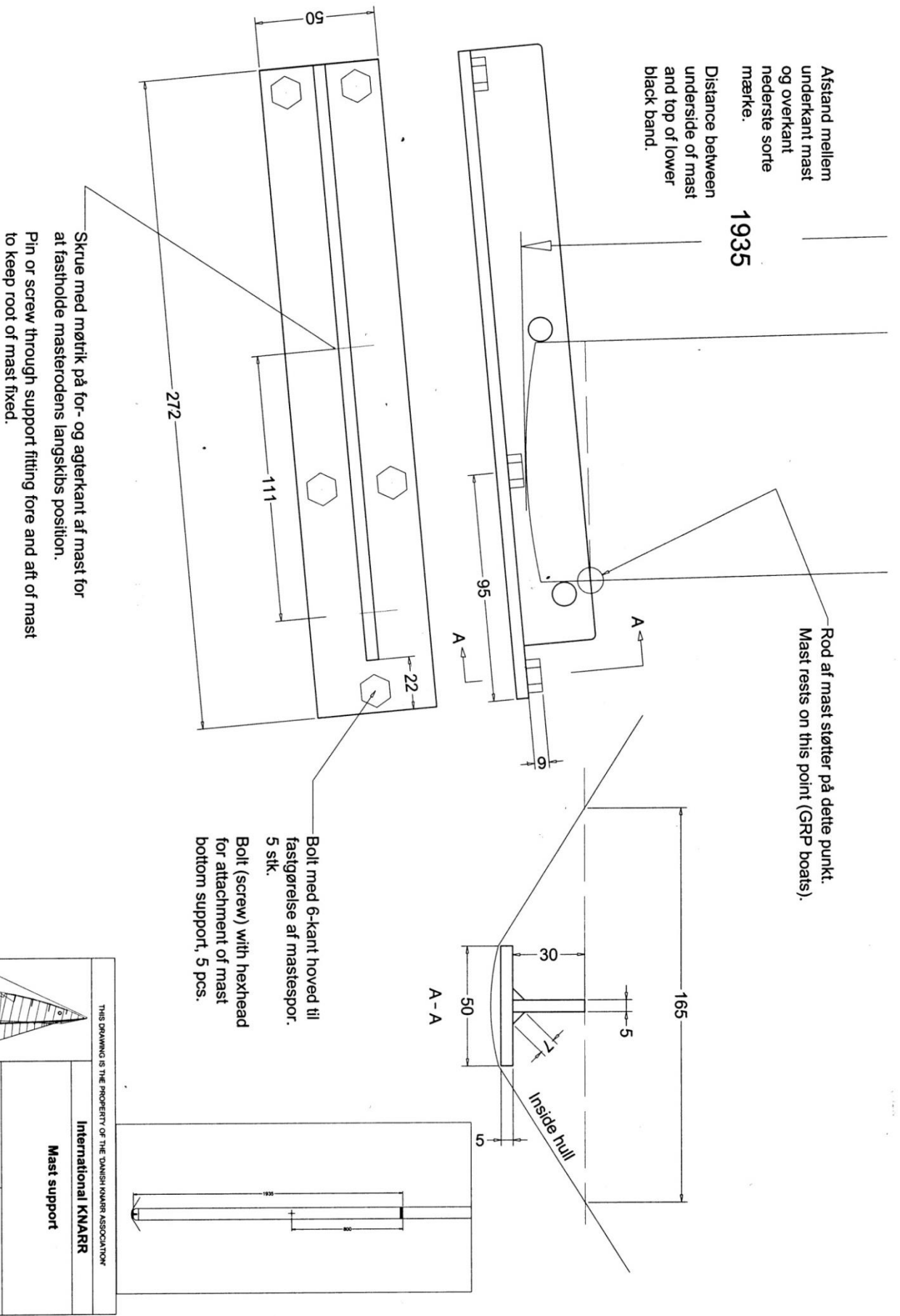
Q



R



	
THIS DRAWING IS THE PROPERTY OF THE DANISH KNARR ASSOCIATION	
International KNARR	
Wooden deck beam deck camber	
Date: 12.01.2010	Rev. date: 26.01.2011
Drawing no.:	Drawn by: Ulf Røsgaard



Bolt med 6-kant hoved til fastgørelse af mastespor. 5 stk.
 Bolt (screw) with hexhead for attachment of mast bottom support, 5 pcs.

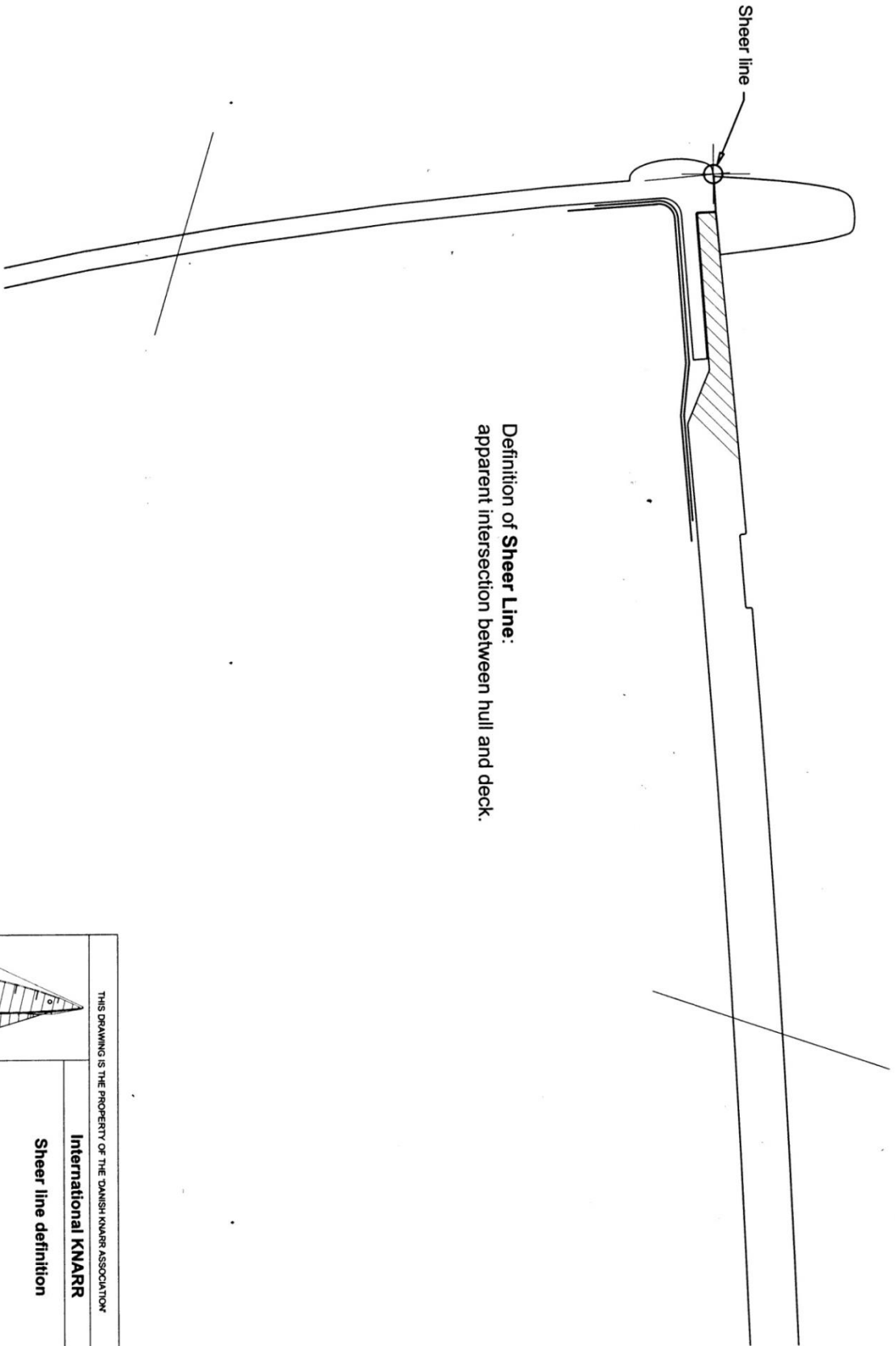
THIS DRAWING IS THE PROPERTY OF THE DANISH KNARR ASSOCIATION

International KNARR

Mast support

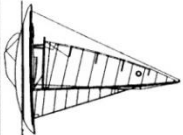
Date:	21.01.2007	Rev. date:	26.01.2011
Drawing no.:		Drawn by:	Ulf Røgeberg

U

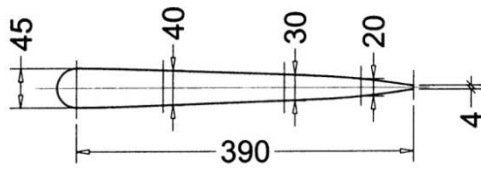


Definition of Sheer Line:
apparent intersection between hull and deck.

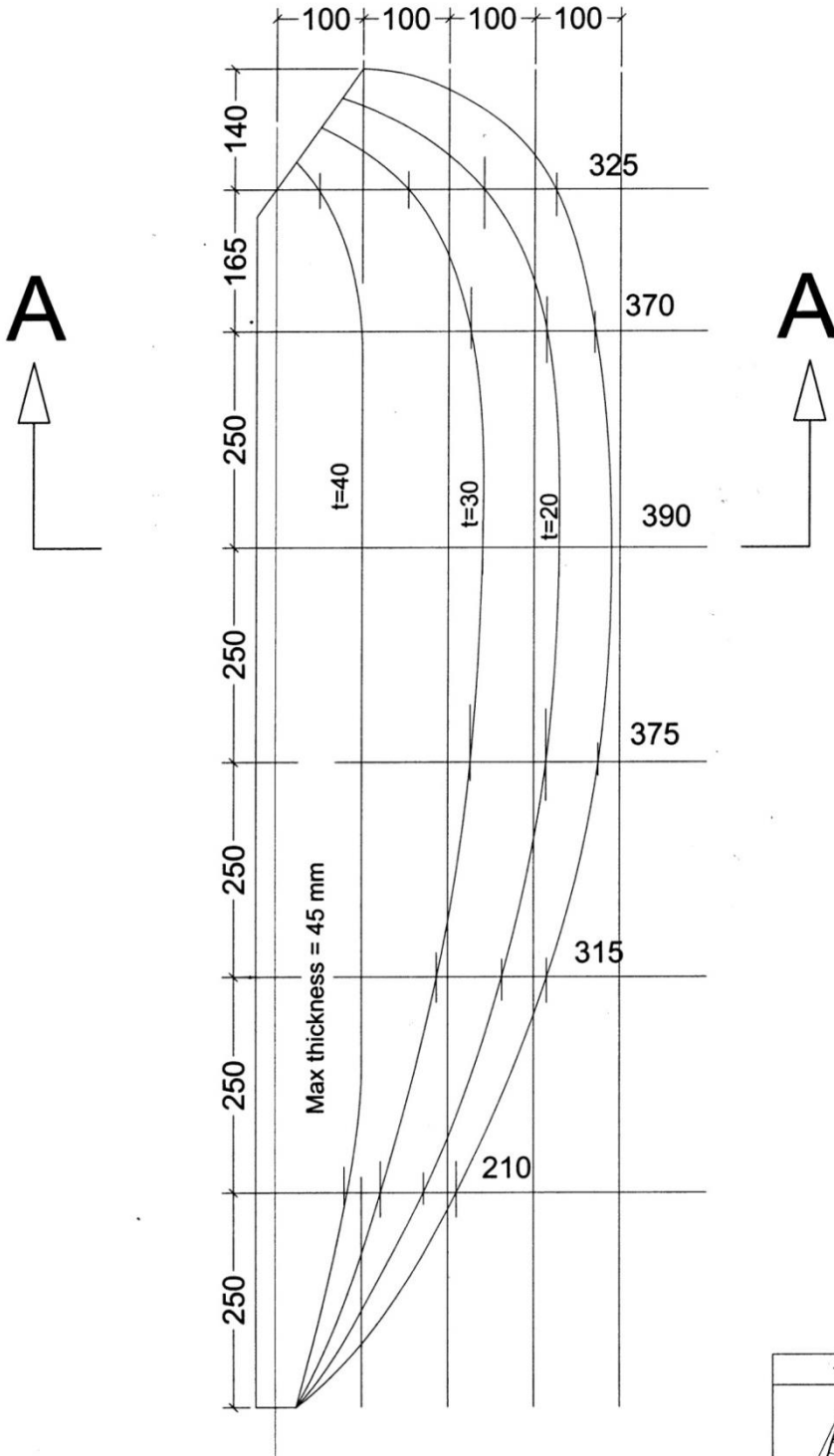
THIS DRAWING IS THE PROPERTY OF THE DANISH KNARR ASSOCIATION			
International KNARR			
Sheer line definition			
Date:	21.04.2010	Rev. date:	27.04.2010
Drawing no.:		Drawn by:	Ulf Ragsberg



V



Section A - A

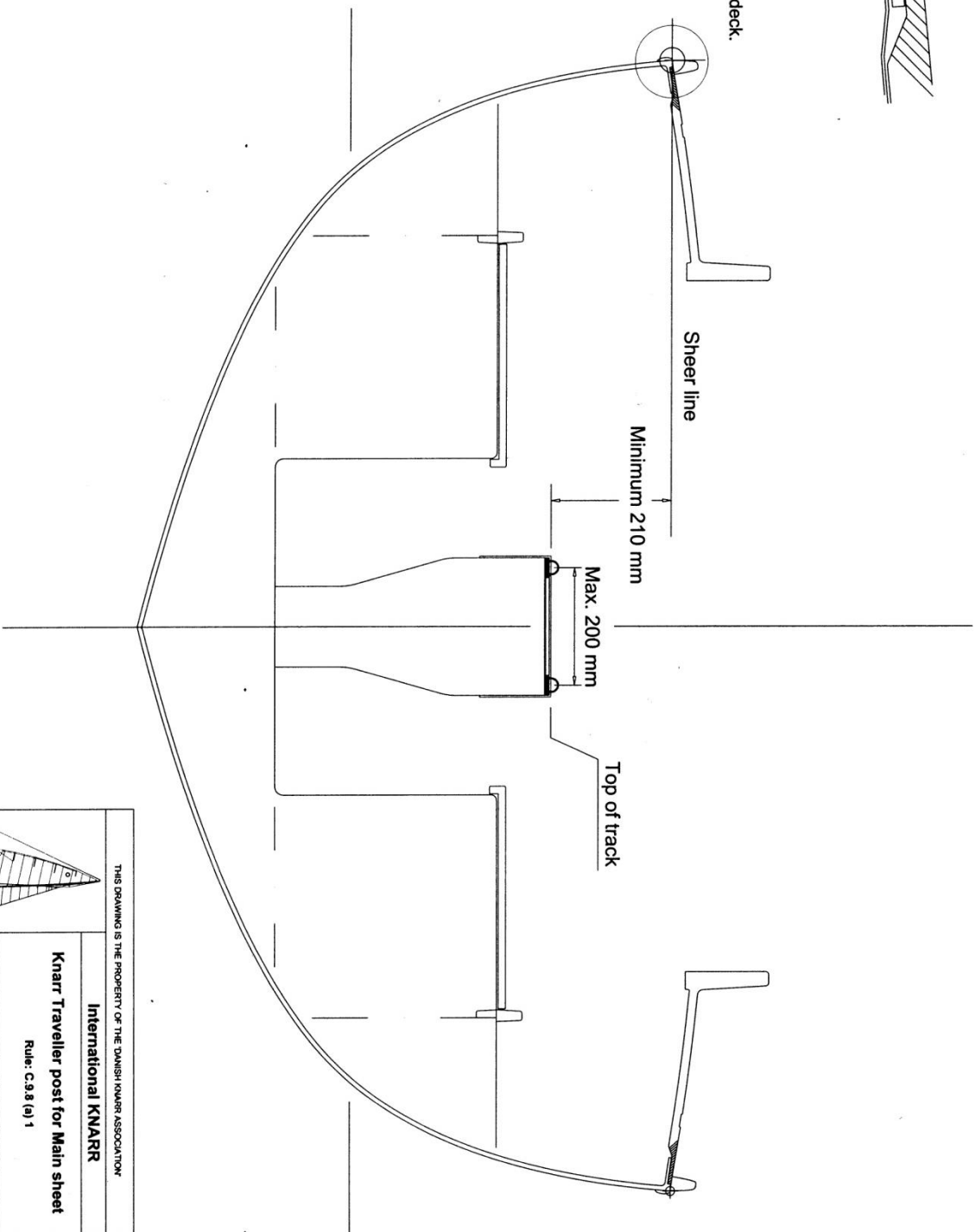
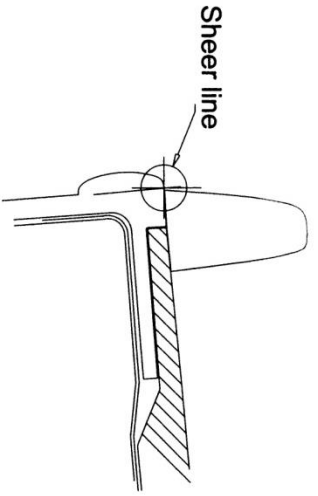


THIS DRAWING IS THE PROPERTY OF THE DANISH KNARR ASSOCIATION

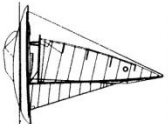
	International KNARR	
	Knarr RUDDER	
Date: 26.01.2011	Rev. date:	
Drawing no.:	Drawn by: Ulf Regeberg	

W

Definition of Sheer Line :
apparent intersection between hull and deck.

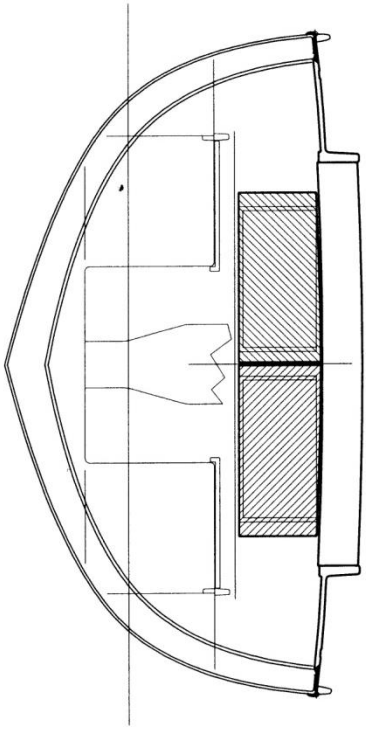


THIS DRAWING IS THE PROPERTY OF THE DANISH KNARR ASSOCIATION	
International KNARR	
Knarr Traveller post for Main sheet	
Rule: C.9.8 (a) 1	
Date: 25.08.2011	Rev. date:
Drawing no.:	Drawn by: Ulf Røggberg

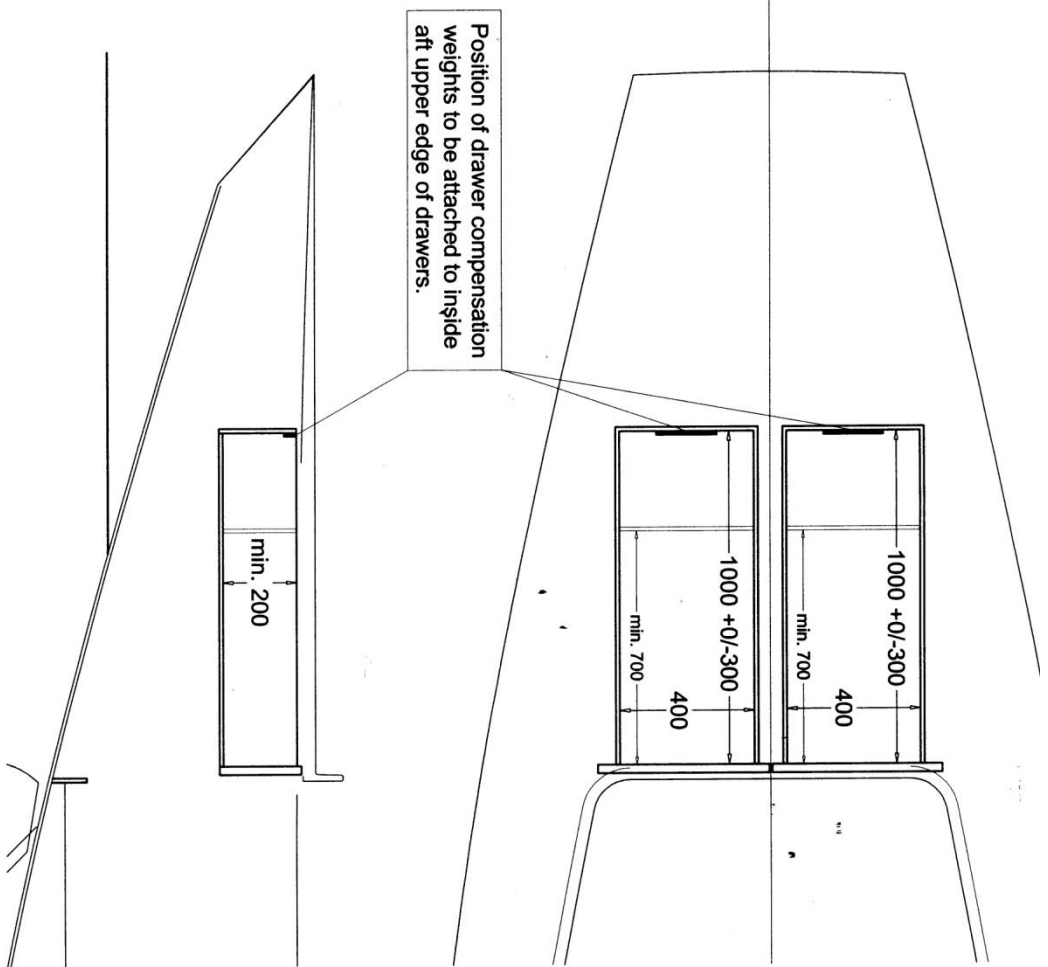


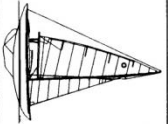
X

Minimum weight of each drawer to be 7,5 kg.



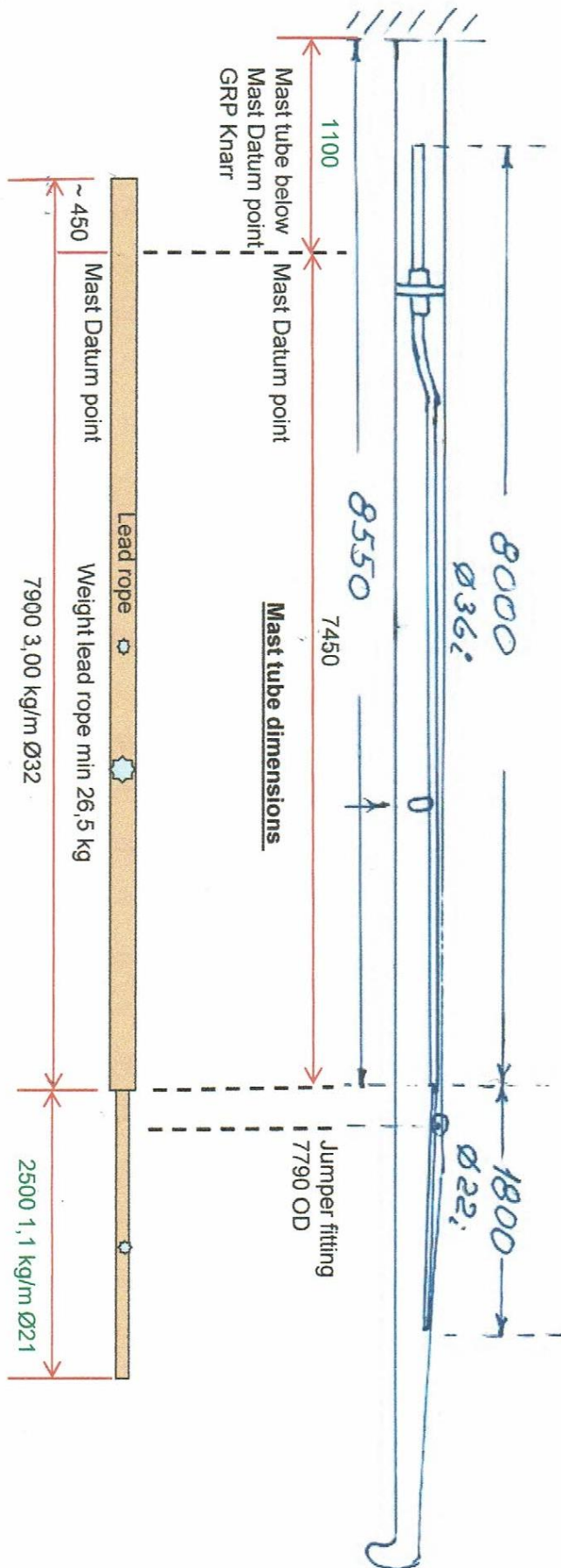
Position of drawer compensation weights to be attached to inside aft upper edge of drawers.




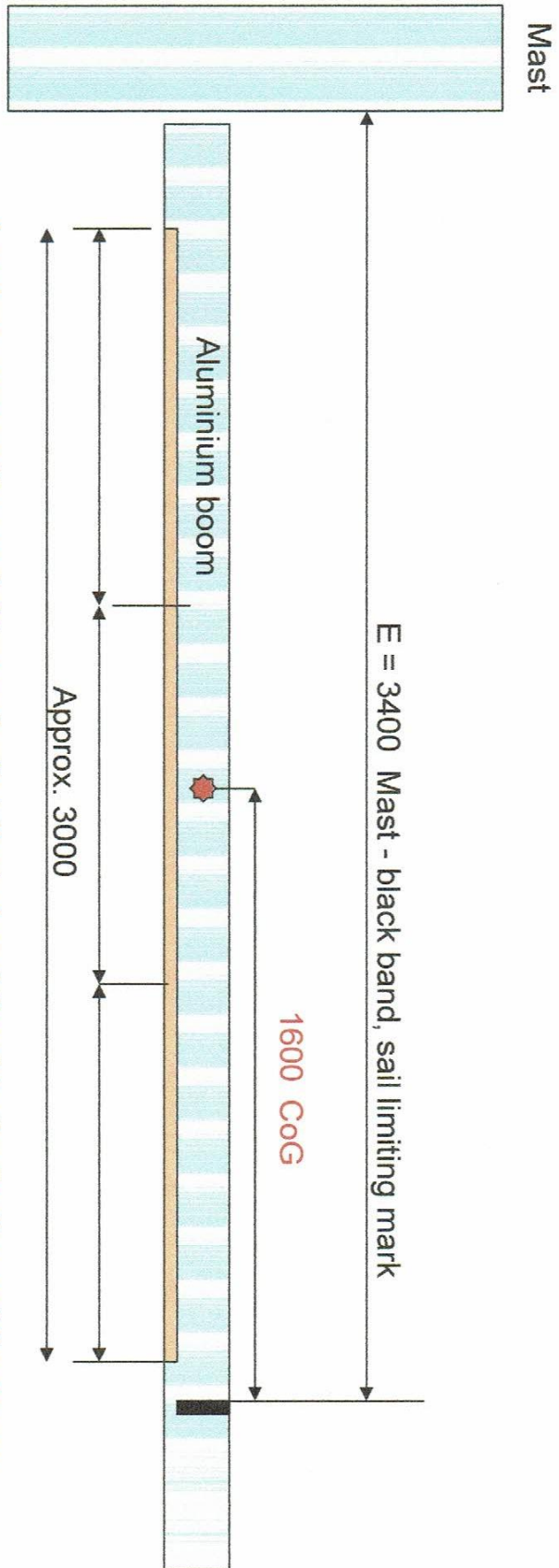
	
THIS DRAWING IS THE PROPERTY OF THE DANISH KNARR ASSOCIATION	
International KNARR®	
Drawers and compensation weights	
Rule: D.9.2	
Date: 05.10.2011	Rev. date: 03.12.2012
Drawing no.:	Drawn by: Ulf Røsgaard



Schematic drawing aluminum mast with compensation weight



Weight compensation Aluminum mast for Knarr Norwegian Knarr Association	
Length measure in mm.	
V9 Drawing by M.H.Haugerud	01-11-2013
V10 Drawing by M.H.Haugerud	25-01-2015



Lead compensation weight evenly distributed and fixed to the bottom of the boom
Compensation weight for aluminium boom 2,5 kg

Weight compensation Aluminium boom for Knarr Norwegian Knarr Association	
Length measure in mm.	
V9 Drawing by M.H.Haugerud	01-11-2013
V10 Drawing by M.H.Haugerud	25-01-2015